

Capri – Villa Etrusca



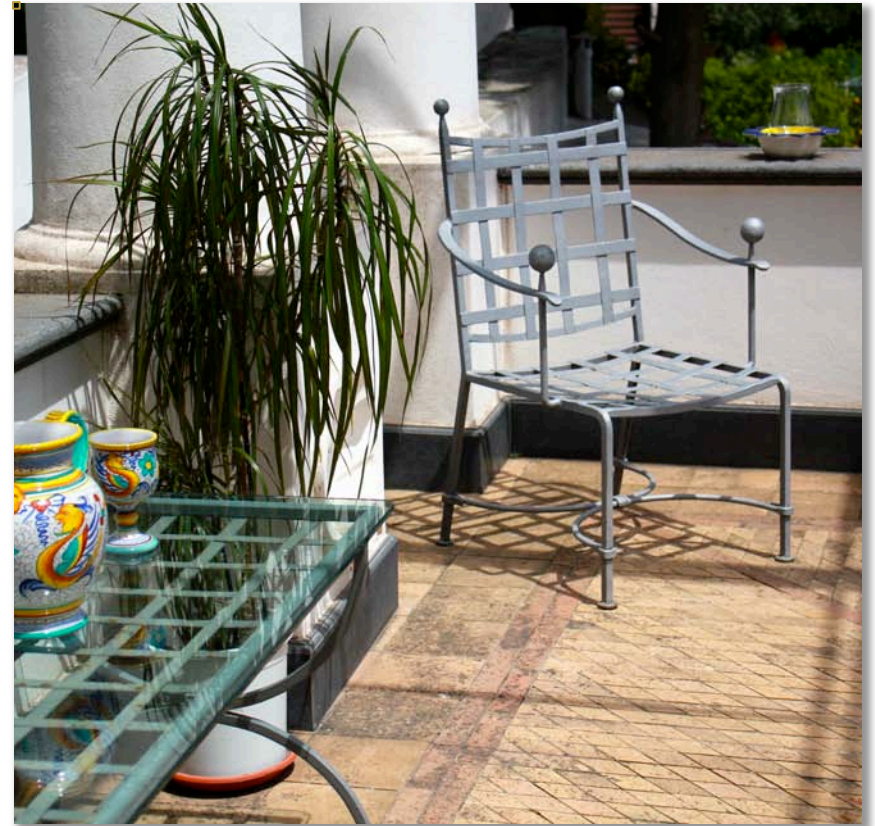
Capri – Villa Etrusca

This precious historical house was built by Edwin Cerio in 1920, along with the street that lead to Marina Piccola's bay.

At that time the owner, Mr. Mario Astarita, was a collector and a lover of the ancient Greece earthenware that gave and still give to this villa a magical and sophisticated atmosphere.



Capri – Villa Etrusca



The access to the first unit is through the main entrance, which leads to a charming and warm living room with two sofas and a fire place; right ahead there is a terrace with a wrought-iron table and chairs for dinners lightened up by the Caprese moon ...

Capri – Villa Etrusca



From the living we enter to the first double bedroom with a fascinating bathroom decorated in marble and mosaics.

Capri – Villa Etrusca

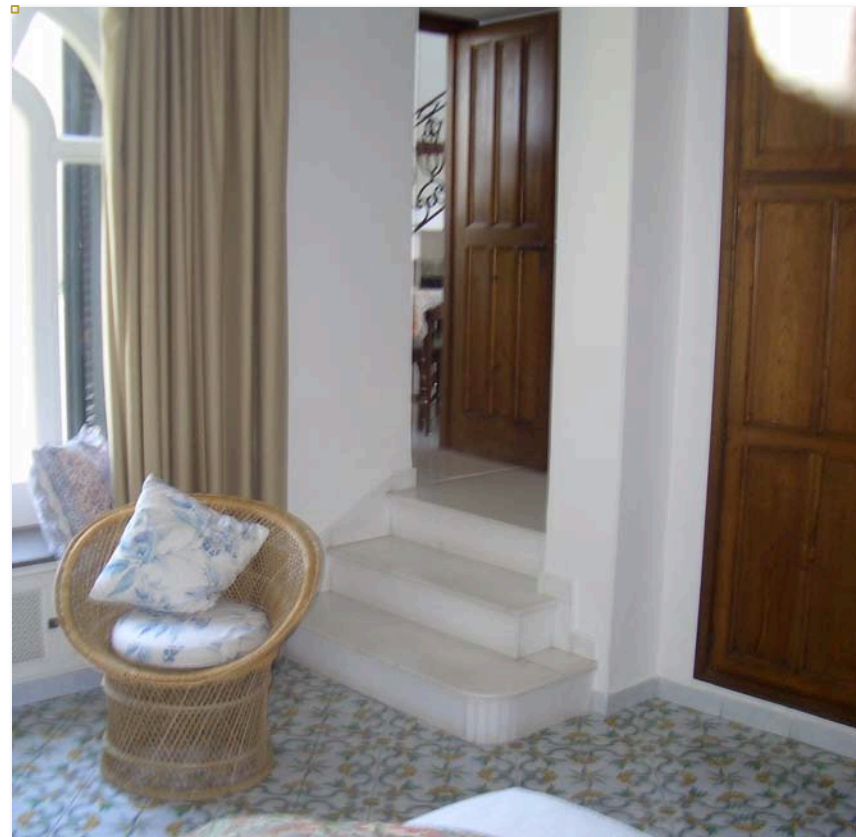
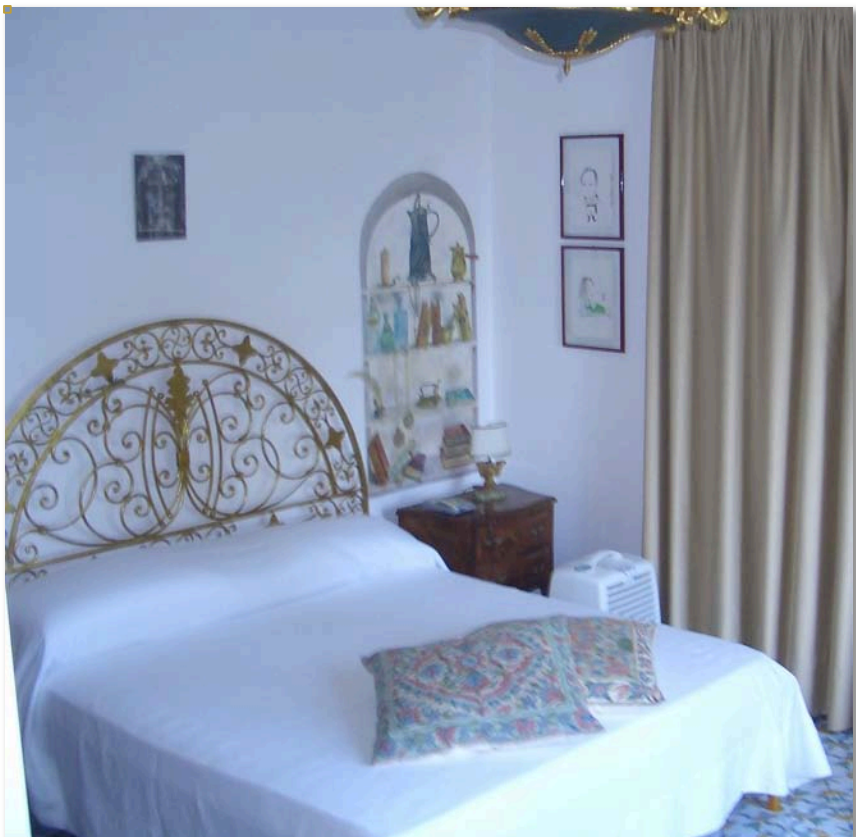


On this floor, a well equipped kitchen with big windows overlooking the sea and hand painted maiolics with capri drawings.

A marble stairway leads to the second bedroom with sea view, frescos on the walls and private bathroom.



Capri – Villa Etrusca



Going down we enter to another independent unit, composed of a double bedroom with little living area, bathroom and small cook hob useful to prepare coffee or a nice cup of tea to drink in the terrace.
Back to the main entrance, following the steps, a single independent bedroom with bathroom ideal for staff.

Capri – Villa Etrusca



Some steps away a first terrace and then one more. Here, in the shadows of the pine trees, everyone can enjoy the same peacefulness and quiet so loved by his ancient owner.

From the last terrace there is another access that reach the pedestrian street that connect the villa in five minutes walk to the amazing beaches of Marina Piccola or, going the way up, to the famous Piazzetta of Capri.

Capri – Villa Etrusca



“When finally I was arrived at home, I use to look the door behind me, remove the mask from my face, dismiss my thoughts from my mind

And then ... Breathe.”

M. Astarita